



Brazos River Authority

Lower Brazos River Floodplain Protection Planning Study
Exhibit E-5
Lower 1% ACE Inundation Mapping vs FEMA Floodplain

2 of 4

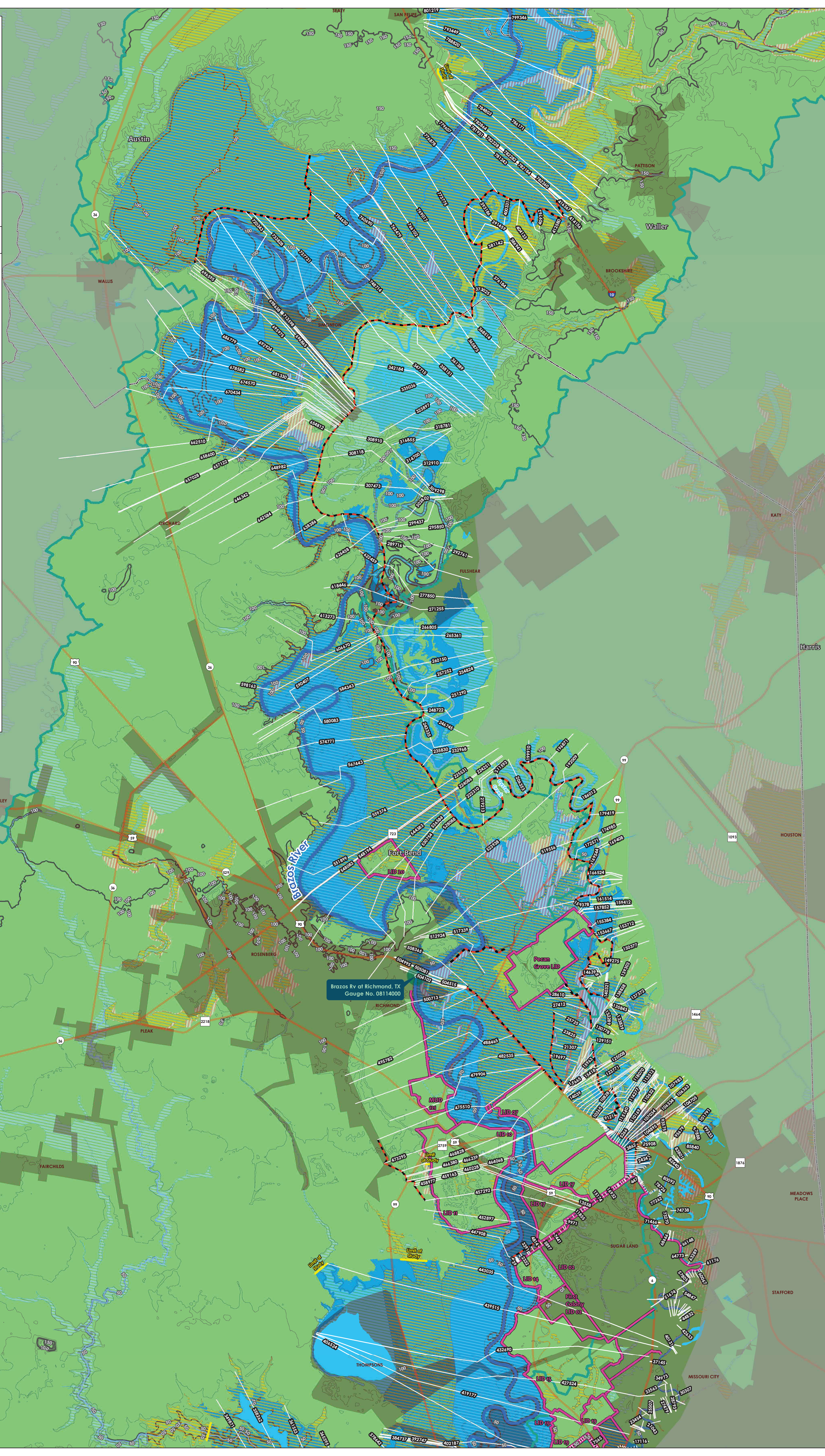
- USGS Gauge
- Cross Section
- Lateral Weir
- Levee
- Limit of Study
- Brazos River
- 10ft Contour
- 50ft Contour
- 1% ACE Mapping Limits
- Basin Limits
- County Line
- FEMA Flood Zones**
- 0.2 PCT ANNUAL CHANCE
- A
- AE
- AE, FLOODWAY



1 inch = 1 miles



Half Associates, Inc.
100 I-45 North, Suite 260
Conroe, Texas 77301-2701
www.half.com



Brazos Rv at Richmond, TX
Gauge No. 08114000

Harris

HOUSTON

STAFFORD

MISSOURI CITY














Brazos River Authority

Lower Brazos River Floodplain Protection Planning Study

Exhibit E-1 Lower 1% ACE Inundation Mapping

1 of 4

-  USGS Gauge
-  Cross Section
-  Lateral Weir
-  Levee
-  Limit of Study
-  Brazos River
-  10ft Contour
-  50ft Contour
-  1% ACE Mapping Limits
-  Basin Limits
-  County Line

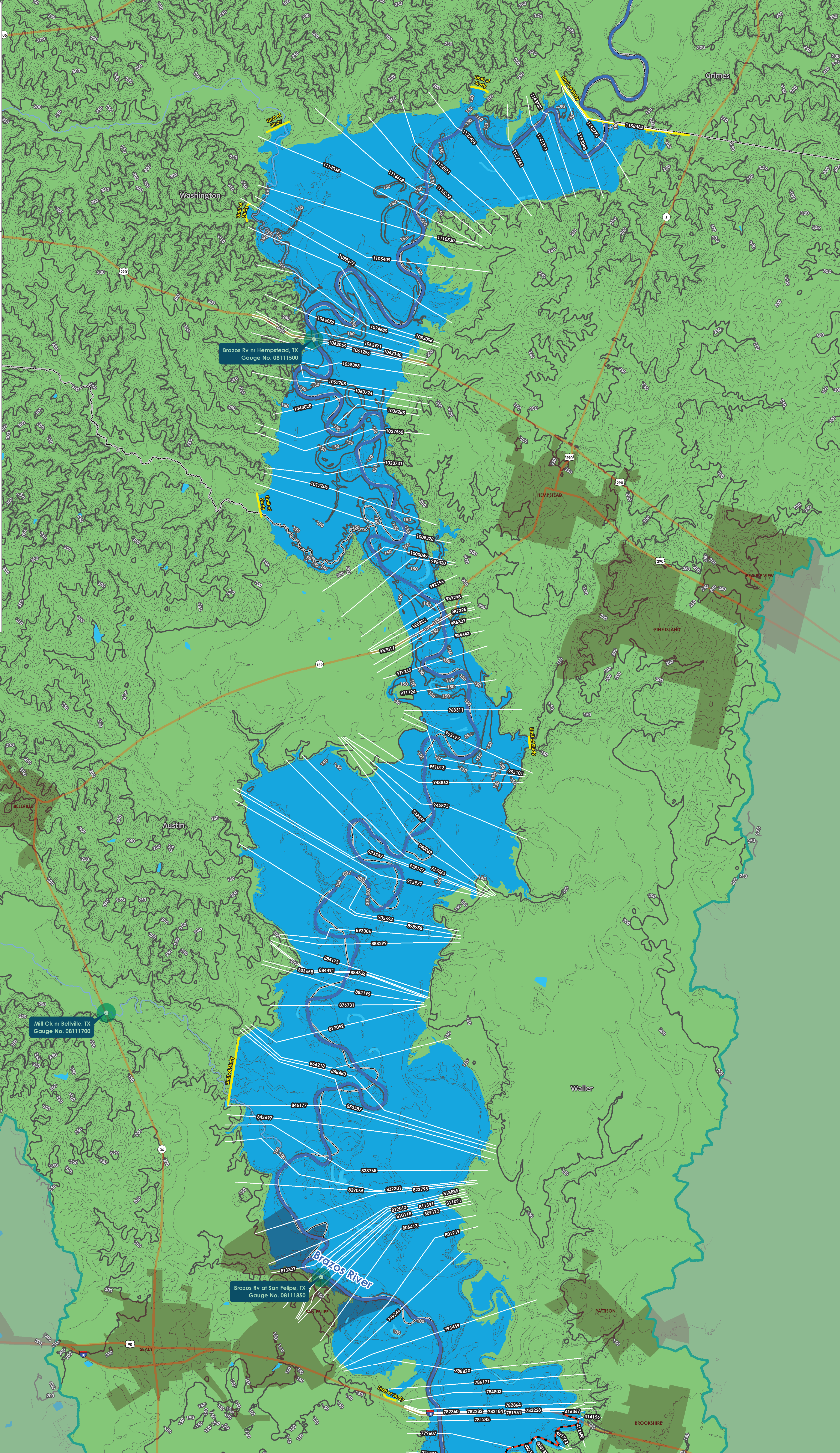


0 1 2 Miles

1 inch = 1 miles



Half Associates, Inc.
100 I-45 North, Suite 260
Conroe, Texas 77301-2701
www.half.com



Brazos River Design Storm Water Surface Elevations				
Cross Section	Water Surface Elevations (ft)			
	10% ACE	2% ACE	1% ACE	0.2% ACE
1158482	173.26	176.63	177.40	179.88
1155776	172.98	176.22	176.96	179.37
1153048	172.86	176.00	176.71	179.06
1143752	172.26	175.28	175.97	178.22
1141313	171.96	174.94	175.61	177.80
1137562	171.25	174.13	174.75	176.78
1127605	167.86	170.63	171.29	173.50
1122071	166.46	168.95	169.61	171.91
1118372	165.94	168.44	169.09	171.42
1116668	164.47	167.38	168.12	170.63
1114038	163.30	166.44	167.26	169.93
1110530	163.04	166.15	166.96	169.63
1105409	162.52	165.64	166.46	169.17
1098272	161.79	165.09	165.94	168.75
1083008	160.79	164.47	165.40	168.36
1074880	160.44	164.19	165.15	168.16
1066052	159.89	163.70	164.69	167.75
1062971	159.09	163.00	164.05	167.24
1062340	158.73	162.75	163.83	167.07
1062059	158.62	162.05	162.92	165.66
1061296	158.09	161.81	162.73	165.54
1058398	156.97	160.89	161.92	164.93
1052788	155.76	160.26	161.37	164.51
1050724	155.50	159.99	161.11	164.28
1043028	154.99	159.51	160.66	163.87
1038285	154.52	159.17	160.35	163.60
1027560	153.41	158.45	159.72	163.13
1020731	152.89	157.86	159.16	162.63
1012206	152.44	157.36	158.68	162.19
1008328	152.34	157.24	158.57	162.08
1000049	151.99	156.86	158.18	161.66
996420	151.72	156.58	157.90	161.36
992156	150.82	155.60	156.91	160.27
989298	150.15	154.87	156.19	159.49
988222	149.80	154.55	155.86	159.14
987325	149.66	154.36	155.66	158.92
987017	149.46	154.10	155.35	158.50
986327	149.23	153.88	155.14	158.30
984643	148.89	153.49	154.75	157.87
979265	147.44	152.28	153.56	156.72
971724	145.31	150.22	151.54	154.77

Cross Section	Water Surface Elevations (ft)			
	10% ACE	2% ACE	1% ACE	0.2% ACE
968311	144.75	149.58	150.88	154.02
963127	144.08	149.00	150.31	153.40
955101	143.35	148.30	149.62	152.70
951013	142.08	146.58	147.82	150.63
948862	141.00	145.23	146.51	149.40
945875	140.19	143.92	145.14	147.84
942857	139.72	143.23	144.41	146.97
940063	139.58	143.04	144.20	146.71
937463	139.40	142.83	143.99	146.45
928147	138.83	142.42	143.62	146.07
923559	138.47	142.11	143.34	145.77
915977	138.31	142.00	143.24	145.67
905692	137.66	141.58	142.86	145.38
898958	136.44	140.90	142.29	144.93
893006	135.47	140.07	141.53	144.12
888299	134.98	139.60	141.09	143.63
885175	134.22	138.75	140.23	142.99
884491	133.98	138.43	139.91	142.61
884356	133.87	138.12	139.45	141.60
883658	133.86	138.09	139.42	141.51
882195	133.69	137.87	139.18	141.19
876731	132.64	136.85	138.15	140.25
873052	131.88	136.04	137.32	139.37
866218	130.94	135.10	136.40	138.18
858483	130.22	134.41	135.72	137.57
850587	129.47	133.83	135.28	137.26
846177	128.47	132.96	134.53	136.37
843697	128.25	132.72	134.28	136.07
838768	127.97	132.44	134.00	135.70
832301	127.32	131.88	133.47	135.50
829065	126.46	130.90	132.52	135.10
823798	125.76	130.03	131.67	134.57
818888	125.41	129.65	131.30	134.15
813827	124.56	128.99	130.77	133.68
812013	123.88	128.42	130.28	133.21
811391	123.61	128.10	130.00	132.92
811091	123.59	127.96	129.84	132.71
810118	123.40	127.73	129.60	132.46
809173	123.14	127.42	129.27	132.08
806413	122.48	126.60	128.37	131.01
801219	121.94	125.86	127.48	129.85
799346	121.81	125.66	127.25	129.53

Cross Section	Water Surface Elevations (ft)			
	10% ACE	2% ACE	1% ACE	0.2% ACE
793449	120.60	124.44	125.99	128.36
788820	119.16	122.81	124.27	126.56
786171	118.60	122.09	123.50	125.75
784803	118.27	121.60	123.02	125.27
782864	117.79	121.03	122.45	124.69
782360	117.59	120.75	122.19	124.47
782282	117.61	120.77	122.06	124.10
782228	117.54	120.52	121.77	123.71
782184	117.50	120.45	121.65	123.53
781951	117.56	120.71	121.98	124.00
781243	117.24	120.28	121.57	123.61
779607	116.93	119.57	120.74	122.68
776878	116.17	118.61	119.65	121.54
773775	115.28	117.37	118.30	120.18
769017	114.30	116.13	116.96	118.91
766102	113.65	115.46	116.09	118.10
763479	112.83	115.13	115.60	117.65
760690	112.01	114.30	114.98	117.13
754630	110.54	113.32	114.24	116.62
748714	110.16	112.87	113.78	116.10
737731	109.18	112.48	113.45	115.79
733828	108.59	112.20	113.22	115.60
720343	107.83	111.96	113.04	115.47
713598	107.10	111.74	112.89	115.37
698638	106.10	111.34	112.57	115.08
696865	105.82	111.12	112.37	114.90
696595	105.77	111.06	112.30	114.83
695975	105.64	110.91	112.16	114.70
692924	105.38	110.61	111.89	114.45
686779	104.98	110.40	111.70	114.31
681330	104.53	110.08	111.43	114.08
678582	104.22	109.86	111.23	113.91
674570	103.80	109.64	111.05	113.76
670434	103.31	109.36	110.81	113.57
662510	101.99	108.54	110.14	113.03
658600	100.58	107.82	109.60	112.66
657122	100.23	107.20	109.07	112.27
657028	100.18	107.15	109.03	112.17
654812	99.89	106.78	108.61	111.69
648982	99.01	106.00	107.86	110.97
646342	98.71	105.71	107.57	110.67
642584	98.20	105.15	106.99	110.09

Cross Section	Water Surface Elevations (ft)			
	10% ACE	2% ACE	1% ACE	0.2% ACE
638386	97.29	104.02	105.83	108.96
630512	96.20	102.74	104.49	107.60
626458	95.44	102.08	103.84	106.93
622459	94.41	100.86	102.55	105.51
618446	93.38	99.43	100.99	103.91
613273	92.31	97.92	99.32	101.82
606670	91.57	97.06	98.41	100.77
598163	90.65	96.23	97.64	100.03
590407	89.94	95.73	97.20	99.64
584343	89.61	95.46	96.94	99.38
580083	89.24	95.19	96.68	99.15
574771	88.71	94.83	96.33	98.84
567443	87.84	94.16	95.70	98.19
559374	86.77	93.18	94.70	97.32
551899	85.98	92.54	94.03	96.83
548194	85.12	92.06	93.56	96.58
548083	85.07	91.99	93.48	96.50
544383	84.09	91.33	92.88	96.07
536584	82.95	90.27	91.94	95.19
530754	81.95	89.24	90.99	94.34
528088	81.43	88.60	90.36	93.73
523938	80.70	87.66	89.32	92.59
519556	80.16	86.83	88.60	91.97
517339	79.54	86.23	87.99	91.45
512924	78.78	85.14	86.86	90.34
508365	78.22	84.43	86.25	89.68
505081	77.38	83.16	84.93	88.69
504995	77.32	83.07	84.96	88.51
504515	77.36	83.07	84.72	88.06
504430	77.38	83.13	84.80	88.18
504199	77.24	82.88	84.52	87.80
504102	77.18	82.82	84.45	87.69
500713	76.34	81.79	83.36	86.47
495782	75.64	80.96	82.51	85.72
488465	75.02	80.43	81.99	85.34
482535	74.60	80.05	81.79	85.16
479906	74.16	79.66	81.52	84.91
475510	73.64	79.36	81.26	84.69
473295	73.26	78.92	80.81	84.29
468828	72.36	77.86	79.67	82.90
466380	71.76	77.21	78.98	81.96
466239	71.71	77.16	78.92	81.84

Cross Section	Water Surface Elevations (ft)			
	10% ACE	2% ACE	1% ACE	0.2% ACE
464068	71.33	76.78	78.53	81.31
460228	70.85	76.21	77.92	80.61
459163	70.66	75.94	77.60	80.16
458977	70.63	75.90	77.56	80.09
457292	70.22	75.37	76.95	79.14
452897	69.26	74.11	75.68	77.17
447908	68.42	73.05	74.59	75.74
443035	68.42	73.05	74.59	75.74
439515	67.43	71.44	72.95	74.44
432690	65.72	68.96	70.12	72.37
427524	64.75	67.84	68.88	70.90
419177	63.46	66.60	67.52	69.34
406524	61.43	65.06	66.35	68.06
402187	60.98	64.68	66.00	67.61
392747	60.42	63.96	65.24	67.12
388559	60.02	63.36	64.58	66.74
384737	59.58	62.85	64.03	66.22
384516	59.39	62.34	63.35	64.87
378642	58.51	61.17	62.02	63.73
373899	57.68	60.05	60.91	62.67
370470	57.09	59.21	60.06	61.74
365595	56.51	58.32	59.05	60.71
361553	56.12	57.64	58.23	59.77
358262	55.90	57.27	57.78	59.21
349871	55.63	56.92	57.36	58.67
344002	55.09	56.20	56.56	57.61
336295	54.18	54.95	55.20	55.99
331351	53.62	54.26	54.46	55.11
324344	53.22	53.81	53.99	54.53
320470	52.83	53.38	53.54	54.02
317000	52.33	52.80	52.94	53.34
312930.3	51.80	52.20	52.31	52.65
308583.5	51.52	51.89	51.99	52.30
305771.6	51.08	51.44	51.54	51.84
305615.2	50.98	51.32	51.42	51.72
302875.8	50.21	50.52	50.61	50.87
297558.3	49.38	49.65	49.74	50.00
294819.1	48.95	49.21	49.30	49.56
291502.8	48.35	48.59	48.68	48.94
288627	47.85	48.08	48.18	48.46
285653.7	47.09	47.33	47.44	47.75
283809.8	46.65	46.89	47.01	47.36

Cross Section	Water Surface Elevations (ft)			
	10% ACE	2% ACE	1% ACE	0.2% ACE
281134.8	46.13	46.38	46.53	46.95
276583.3	45.12	45.44	45.65	46.33
275349.9	44.74	45.10	45.34	46.16
273833.2	44.36	44.77	45.06	46.07
271317.6	43.73	44.22	44.62	45.94
268824.9	43.16	43.80	44.29	45.75
266784.9	42.58	43.42	43.95	45.42
257935.3	40.65	42.24	42.91	44.51
255458.2	40.22	41.91	42.60	44.19
253920.7	39.95	41.64	42.30	43.84
248467.6	39.24	40.86	41.46	42.94
247254.6	39.16	40.76	41.35	42.81
246307.5	38.98	40.56	41.15	42.60
245582.1	38.85	40.42	41.00	42.44
244296.3	38.62	40.14	40.71	42.12
241798.8	38.17	39.55	40.08	41.42
238317.3	37.66	38.95	39.47	40.77
235923.4	37.08	38.11	38.55	39.62
233849.8	36.73	37.65	38.05	39.04
232926.9	36.60	37.48	37.87	38.82
232298.7	36.47	37.32	37.70	38.63
228171.5	35.70	36.39	36.71	37.53
226430.5	35.40	36.07	36.36	37.17
223178.3	34.89	35.54	35.84	36.69
220535.9	34.38	35.06	35.40	36.37
218197	33.87	34.61	35.01	36.11
215636	33.45	34.23	34.65	35.77
212690.4	33.02	33.76	34.15	35.21
206664.8	32.06	32.67	32.97	33.85
200926	31.11	31.62	31.86	32.68
196787.5	30.49	30.95	31.15	32.04
190306.2	30.03	30.49	30.68	31.73
186824.7	29.76	30.24	30.44	31.59
183829.7	29.51	30.01	30.23	31.44
179479.5	29.02	29.55	29.78	30.94
179155.4	28.95	29.48	29.71	30.84
178789.6	28.87	29.40	29.61	30.72
177914.6	28.79	29.32	29.53	30.60
174103.5	28.46	29.00	29.20	30.20
172112.3	28.18	28.74	28.94	29.94
169715.3	27.79	28.40	28.60	29.68
165604.2	27.14	27.86	28.09	29.40

Cross Section	Water Surface Elevations (ft)			
	10% ACE	2% ACE	1% ACE	0.2% ACE
159474.3	26.27	27.24	27.54	29.12
152282.2	25.33	26.68	27.12	28.93
145725.1	24.67	26.35	26.89	28.81
143092	24.41	26.15	26.74	28.69
136684.7	23.77	25.78	26.46	28.54
131329	22.95	24.83	25.43	27.14
130048.3	22.61	24.43	25.00	26.57
129598.5	22.52	24.33	24.88	26.40
128597.7	22.25	23.97	24.50	25.93
127887.8	22.12	23.79	24.30	25.67
126833.8	21.78	23.39	23.89	25.20
120463.4	20.21	21.63	22.11	23.28
116704.6	19.54	20.99	21.51	22.69
113664.9	18.77	20.27	20.80	21.98
102513.1	17.04	18.88	19.41	20.57
96764.34	16.34	18.35	18.87	20.11
91471.59	15.88	18.01	18.53	19.84
87845.22	15.38	17.66	18.20	19.53
84697.1	14.91	17.31	17.87	19.22
82907.93	14.57	17.03	17.59	18.95
82530.34	14.26	16.65	17.16	18.39
80892.66	14.04	16.42	16.93	18.15
77862.15	13.70	16.10	16.60	17.79
75117.98	13.39	15.78	16.26	17.42
72649.6	12.83	15.17	15.61	16.65
68849.01	12.17	14.52	14.91	15.82
66026	11.56	13.91	14.28	15.10
62557	11.00	13.37	13.72	14.49
58377	10.21	12.54	12.87	13.54
55599	9.43	11.67	11.98	12.56
53486	8.56	10.65	10.92	11.40
51424	8.28	10.01	10.22	10.61
48402	7.87	9.47	9.62	9.92
45585	7.57	9.09	9.23	9.49
41087	7.19	8.72	8.89	9.19
37527	6.98	8.54	8.73	9.06
32269	6.66	8.27	8.48	8.87
27098	6.07	7.63	7.88	8.40
26001	5.97	7.49	7.76	8.30
25641	5.96	7.47	7.74	8.29
25070	5.98	7.49	7.76	8.31
23412	5.92	7.43	7.70	8.25